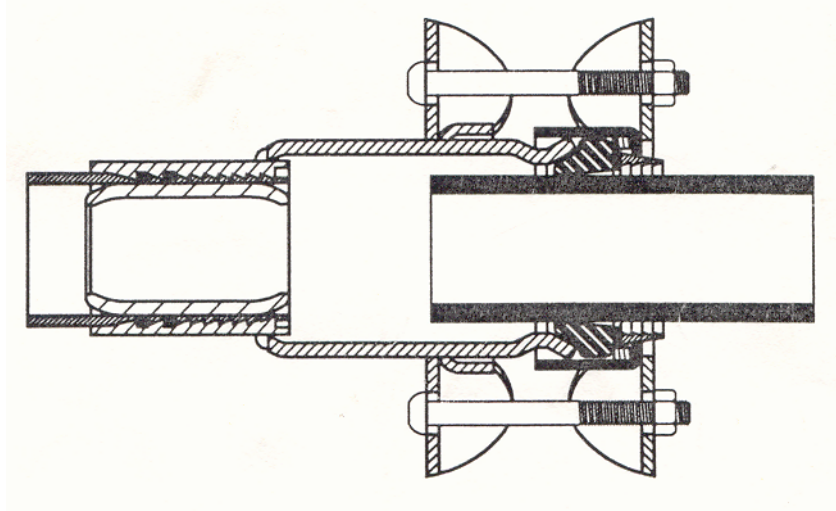


Smith-Blair, Inc.
IPS X IPS EZ TRANS Instruction Sheet



Installation Instructions
Fusion End

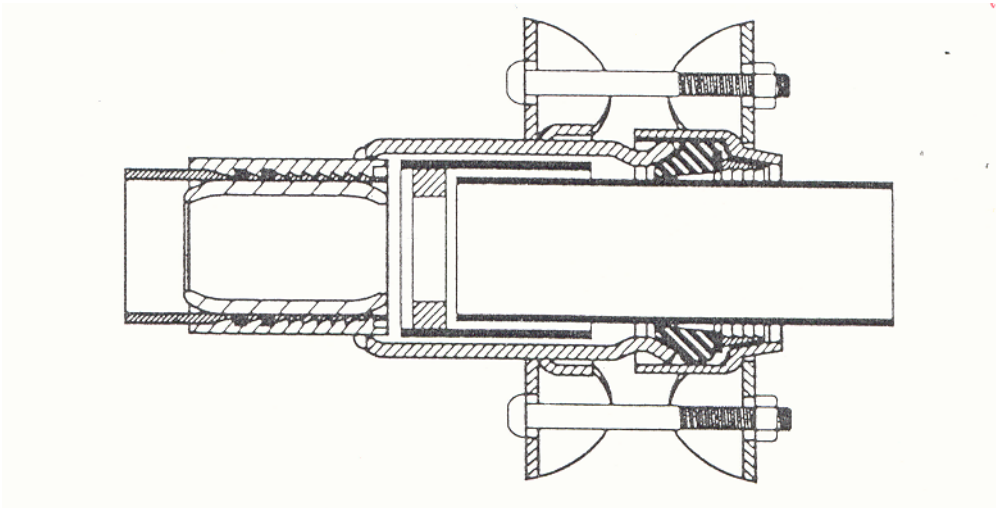
1. Fuse pipe utilizing approved methods and personnel.

Mechanical End

2. Clean pipe to be inserted into coupling end of fitting 6" back from end, removing dirt, rust, scale and oil. Pipe must be cut square and outer surface must be free of longitudinal grooves.
3. Mark pipe 5" back from end.
4. Insert spacer ring into coupling.
5. Soap gasket and pipe.
6. Stab metallic pipe into coupling.
7. Align mark on pipe with edge of flange.
8. Tighten nuts fully and evenly to 80-90 ft. lbs.



Smith Blair Inc. CI X IPS EZ TRANS Instruction Sheet



Installation Instructions Mechanical End

Do Not fuse PE to fitting prior to Installation of Mechanical End.

1. Clean pipe to be inserted into coupling end of fitting 6" back from end, removing dirt, rust, scale and oil. Pipe must be cut square and outer surface must be free of longitudinal grooves.
2. Mark pipe 5" back from end.
3. Ensure coupling nuts are loose.
4. Soap pipe and coupling gasket.
5. Insert spacer ring into coupling.
6. Stab metallic pipe into coupling.
7. Align mark on pipe with edge of flange – being sure fitting is not “bottomed out” on pipe end.
8. Tighten nuts fully and evenly to 80-90 ft. lbs.

Fusion end

9. Fuse pipe utilizing approved methods and personnel.